



# Acme Sanitary Ware Co. Ltd.


1/F, Acme Building, 22-28 Nanking Street, Kowloon, Hong Kong  
 Tel: 2388 7171 Fax: 2710 8012  
 Email: acme@acmesanitary.com.hk  
 Website: www.acmesanitary.com.hk



Pure Freude  
an Wasser

PROJECT		REF		REV	ITEM CODE	
LOCATION		DATE			PAGE	

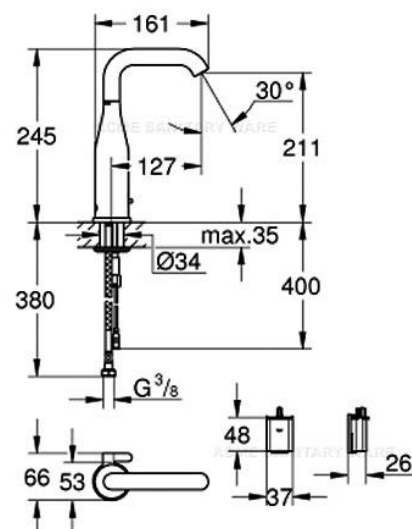
## SANITARY WARE SPECIFICATION SHEET

Item Descriptions	GROHE (Germany) "Essence E" Infra-red electronic basin mixer 1/2" in DC Supply with mixing device and adjustable temperature limiter ; nominated flow rate <b>3.7 L/min</b> in WELS Grade 1; Registration No. TM 18-0167	<p>Illustration/ Drawing</p>  <p>ACME SANITARY WARE</p>
Dimensions	L161 x W66 x H245 mm	
Model	36445000	
Finish	Chrome Plated	
Manufacturer	GROHE Limited	
Supplier	Acme Sanitary Ware Co. Ltd Mr. Eric Wong/ Mr. Don Yuen	
Contact Tel/Fax E-mail Website	(852) 2388-7171 / (852) 2710-8012 acme@acmesanitary.com.hk www.acmesanitary.com.hk	

Dynamic flow pressure (kPa)	50	150	250	350	500
Flow rate (l / min )	1.68	2.98	3.60	4.38	5.18

### Essence E

Infra-red electronic basin mixer 1/2" with mixing device and adjustable temperature limiter with infrared sensor for bi-directional communication for monitoring, configuration and service purpose  
 6V lithium-battery, type CR-P2  
 battery lifetime: approx. 7 years (150 actuations a day)  
 GROHE StarLight chrome finish  
 adjustable swivel area 0° / 150° / 360°  
 laminar spray regulator 5.0 l/min  
 flexible connection hoses  
 non-return valve  
 dirt strainers  
 with integrated solenoid valve  
 external battery  
 rapid installation system  
 multistage battery status display  
 7 pre-set programs:  
 auto flush  
 thermal disinfection  
 cleaning mode  
 additional functions and precise settings  
 by remote control 36 407  
 CE approved  
 noise classification 1 in accordance with DIN4109  
 type of protection faucet IP 59K  
 minimum pressure 1.0 bar



\* All information of the above is for the reference only. No prior notice is made if any changes.

註冊號碼 (Registration No.): TM 18-0167



自願參與用水效益標籤計劃 - 水龍頭  
Voluntary Water Efficiency Labelling Scheme - Water Taps



冊證書

Registration

茲證明

This is to certify that



將下列水龍頭在本計劃內註冊：  
has registered the following water tap under this scheme :

牌 子 / Brand	:	GROHE
型 號 / Model	:	36445000
種 類 / Type	:	Mixing
原產地 / Country or Region Origin	:	Germany

在用水效益標籤上展示的標誌

*Symbolic Presentation on the Water Efficiency Label*



滴水點

*Water droplet(s)*

用水效益級別

*Water Efficiency Grade*

: 1

with additional merit\*

耗水量

*Water Consumption*

: 3.7

公升/分鐘

*litres/minute*

\*with additional merit of "Automatic closing mechanism"

簽發日期:

13 July 2018

Date of Issue:



水務署

Water Supplies Department



水務署署長(周世威代行)  
for Director of Water Supplies



水務署  
Water Supplies Department

總部 Headquarters

士打道七號入境事務大樓 48 樓

7 Gloucester Road, Wan Chai, Hong Kong



本署檔號  
Our ref.  
來函檔號  
Your ref.

21/2023 T/J(346/2023)

電話 :  
Tel.  
傳真 : 2824 0578  
Fax.

18 May 2023



**Approval of "GROHE" Sensor Mixer  
(General Acceptance No. C20230327)**

Your letter ref. WRC/2864 dated 3 April 2023 and subsequent submissions received by this department up to 4 May 2023 refer.

Having considered the test report ref. J28891r1 issued on 28 April 2023 by Nutek Systems (HK) Ltd., this Authority accepts that the fitting described below complies with, and its use when correctly installed does not contravene, the Waterworks Ordinance and Regulations.

**Name of Manufacturer:** Grohe AG

**Country of Origin:** Germany

**Brand:** Grohe

**Details of Fitting:** 3/8" Deck mounted sensor basin mixer

**Model:** 36445XXX  
(where "XXX" denotes the code of colour)

**Body Markings:** **GROHE**

**Expiry Date:** 29 March 2028



This Authority hereby permits the use of the above fitting in fresh water plumbing systems subject to full adherence to Waterworks installation requirements. In particular, you are required to draw your customers' attention to the following requirement-

"The cold water supply to the fittings shall be drawn from the same source that supplies the hot water apparatus so as to provide a balanced pressure and to obviate the risk of scalding in the event of a restriction or failure in the water supply."

"A stop cock or gate valve must be installed at the upstream of the fittings for manual isolation of water supply." AND

"The main voltage operated sensor valve should comply with the electricity safety regulation for applications in bathroom, toilet etc."

A condition of this acceptance is that the fitting to be installed shall be replicas of the sample as certified by the testing agent mentioned above and without modifications. This acceptance may be withdrawn at any time if the standard of the fitting installed fails to meet that of the approved sample or if the fitting is found to be unsuitable for use in fresh water plumbing systems.

This acceptance is only applicable to the main body of the fitting, unless otherwise specified.

For the use of the fitting in any project, the General Acceptance Number of this letter must be quoted as a means of identification of acceptance of the fitting by this Authority.

Should you have any enquiries, please contact our Engineer Ms Winnie LO at tel. no. 3583 4086.

Yours faithfully,



(YAU Hau Yin)  
for Director of Water Supplies

Encl.

c.c.      WSD 3321/1/82    ] - without catalogue  
             ME/MC            ] - with soft copy only